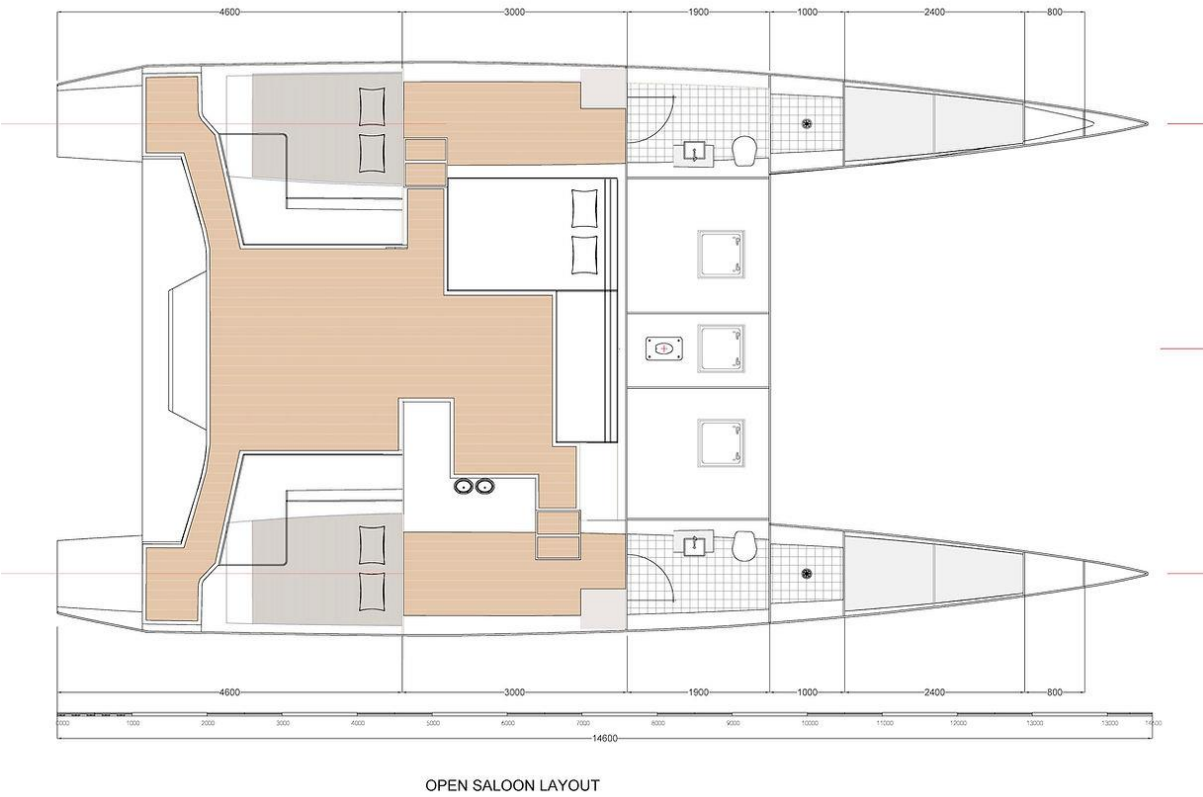
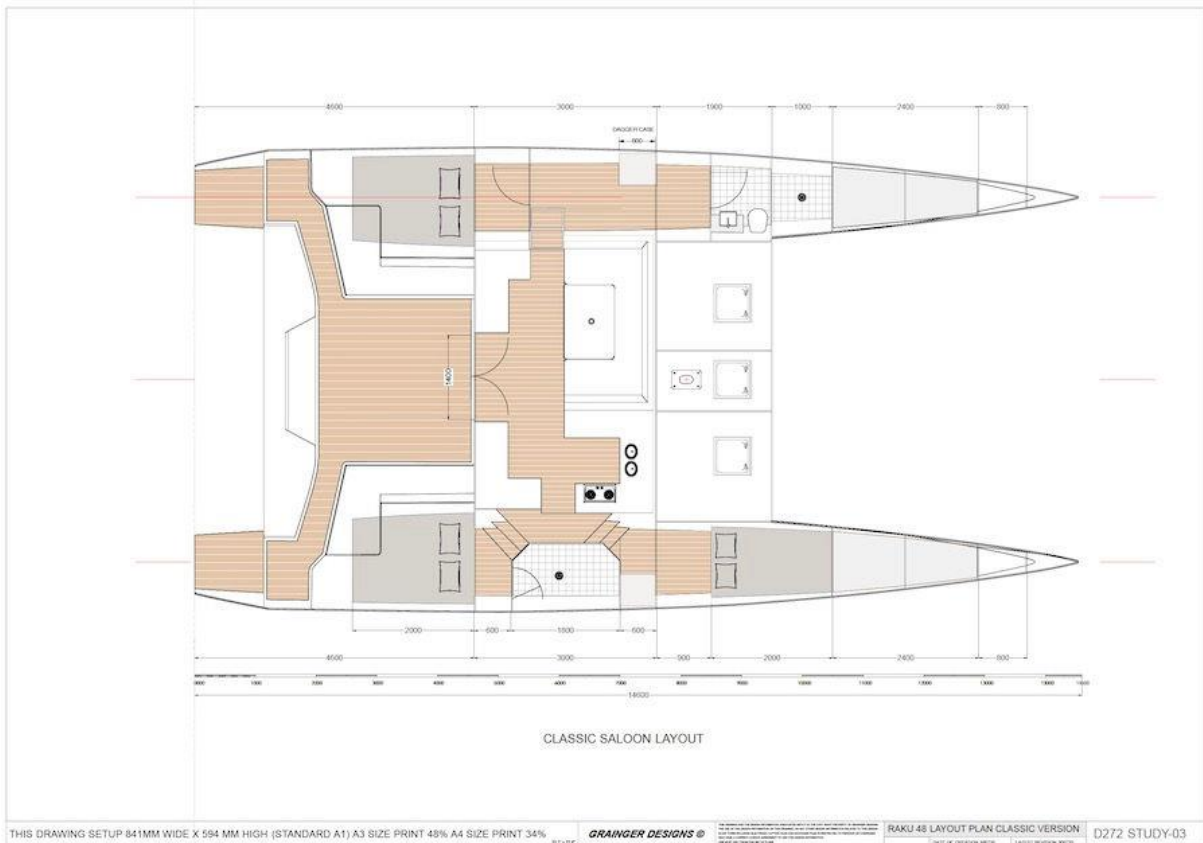


Raku 48 Performance Cruising Catamaran

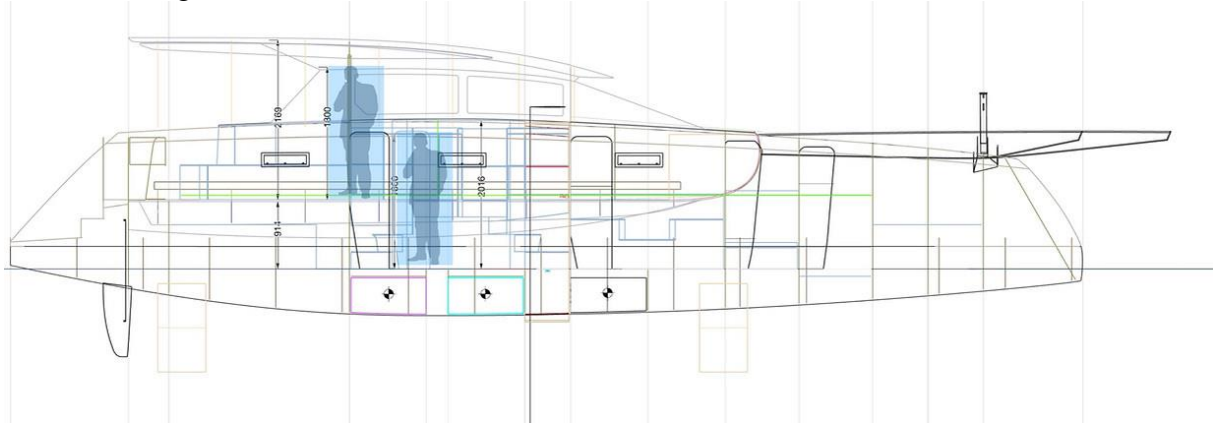




In Saloon 2169mm (7'1")
 In Hulls 2016mm (6'7")

Headroom

Headroom in the Saloon is measured from the sole to the underside of the cabin roof.
Headroom in the Hulls is measured from the cabin sole to the underside of the side deck.
The human figures are 1.8m tall (5'11")



Raku 48 Catamaran Specifications



LOA	14.600 (47'11")
BOA (m)	7.669
Beam CL-CL m.	3.00
Hull Draft mm	635
Hull B:L	1:13
Draft Rudder mm	1179
Draft Daggerboard mm	2107
Draft Fixed Keel mm	1200
Wing Clearance	911
Headroom in Saloon	2169 (7'1")
Headroom in Hulls	2.016 (6'7")
Aux Power 2 x inb. Diesel	Aux Power Twin Sail Drive 35-45HP

Disp Light kg (DWL-100mm)	7688
Disp. DWL kg	10077
Disp. Max.kg. DWL+100mm	12657
Payload Disp. kg	4969

Sinkage Rate (2 hulls)

RM kg/m	30231
---------	-------

RIG

Mast Above Deck	20452
-----------------	-------

Air Draft	22378
-----------	-------

SAIL AREAS SQ.M.

Main

Self Tacking Jib

Code Zero/Screecher

MH Gennaker

SAIL AREAS STANDARD RIG SQ.M.

Main	82.63
------	-------

Self Tacking Jib	34.09
------------------	-------

Code Zero/Screecher	72.96
---------------------	-------

MH Gennaker	107.54
-------------	--------

Designers

Grainger Designs

Raku 48 Catamaran Accommodation

